

FORM 8966



TELE-FAULT II™

FIRST-OUTAGE FAULT FINDER/ANNUNCIATOR

- Compact Design
1/4 Din Size
- Start-Up Status
Display
- First-Outage
Readout
- Power Interruption
Indicator

SINGLE WIRE CONNECTIONS NO ADDITIONAL RELAYS



... unequalled reliability and operating savings for monitoring equipment in heating and processing systems.

- SILENCE ALARM** — Button to silence audible alarm.
- RESET REQUIRED** — Red light indicates reset required.
- POWER INTERRUPTION** — Yellow light indicates power interruption.
- RESET** — Green light indicates reset mode.
- RESET** — Button to reset TELE-FAULT II.

FIRST OUT — Red light indicates first limit causing shutdown.

LEGEND CARD — Inserts behind clear plastic window.

START UP — Yellow light indicates any and all open limits when power is applied.

MADE IN U.S.A.

TELE-FAULT II signals first-outage fault with total reliability

... Monitors up to 8 read-out positions (TELE-FAULT II units may be cascaded for additional read-out positions.)



PROTECTION CONTROLS, INC.

ELECTRICAL SAFETY EQUIPMENT

7317 N. LAWNSDALE AVENUE
P.O. BOX 287 • SKOKIE, ILLINOIS 60076-0287
(708) 674-7676 • CHICAGO PHONE: (312) 763-3110
FAX: (708) 674-7009

NEW	Area Code 847
Skokie Phone	(847) 674-7676
FAX	(847) 674-7009
Chicago Phone	(773) 763-3110

FEATURES

Monitored limits can be of normally open or normally closed contact configuration, with all contacts in closed position during normal operation.

Easily adaptable to new or existing installations. No requirement for isolated limit switch contacts.

Quickly pinpoints and indicates only the first cause of any malfunction or equipment failure that may trigger other faults.

INSTALLATION

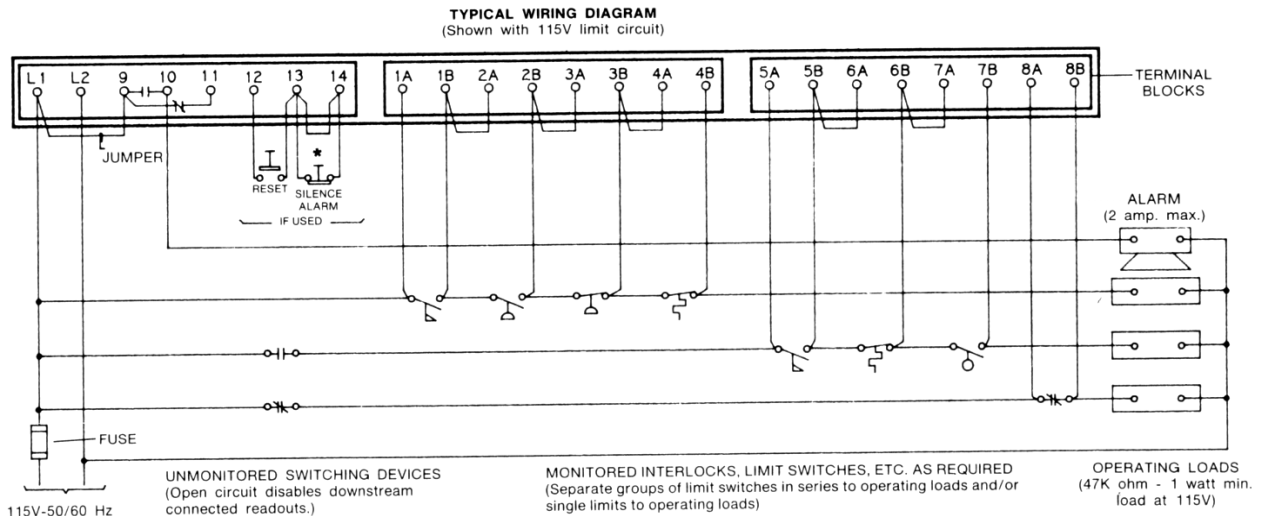
1. Wire according to typical external wiring diagram.
2. Type or print fault device identification on legend card. Each display area 10mm x 62mm (0.4 in. x 2.4 in.) accepts two lines—24 letters each of No. 10 size type.
3. Remove bezel.
4. Insert legend card under protective plastic, and align holes on lights.
5. Replace bezel.
6. The **TELE-FAULT II** may be used with remote silence alarm and reset buttons.
7. See INSTRUCTIONS T-66.

OPERATION

1. The **TELE-FAULT II** is fully operational with power applied (green RESET light is on).
2. Push the RESET button to extinguish the yellow POWER INTERRUPTION light.
3. During start-up, any and all open limit switches will be indicated by the yellow OPEN LIMIT light for that position. The light will automatically extinguish when that switch closes. FIRST-OUT mode is inoperative until all open limits are closed and in operating position. **TELE-FAULT II** then switches automatically from START-UP to FIRST-OUT mode.
4. Once the limits are closed and in operating position any first-outage will result in illumination of the red light for that position. If an alarm device is used, push SILENCE ALARM to de-energize alarm. Push RESET button when fault is corrected.

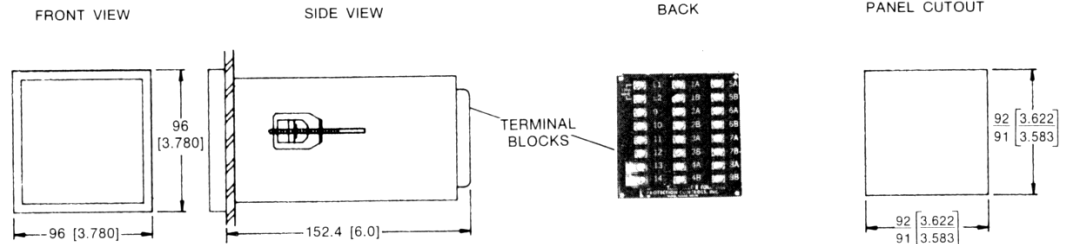
SPECIFICATIONS

Ambient temperatures: Minus 20 to plus 125°F
 Power supply: 115V AC \pm 10%, 50/60 Hz
 Limit circuit: 24V to 230V, AC or DC
 Power consumption: 2 VA
 Alarm contact: 250VA



*Remove factory jumper when remote silence alarm is used.

DIMENSIONS:
Millimeters [Inches]



INSTALLATION, OPERATION AND MAINTENANCE SHALL CONFORM WITH NATIONAL FIRE PROTECTION ASSOCIATION STANDARDS, NATIONAL AND LOCAL CODES, AND AUTHORITIES HAVING JURISDICTION. ANY MODIFICATION VOIDS APPROVALS.



TELE-FAULT[®] II FORM 8966

FIRST-OUTAGE FAULT FINDER

LIGHTS and PUSHBUTTONS

START-UP Lights Indicate all monitored open limits when power is applied or when RESET button is pressed.

FIRST-OUT Lights Indicate first monitored limit to open.

SILENCE ALARM Button De-energizes FIRST-OUT alarm circuit.

RESET REQUIRED Light Indicates TELE-FAULT II requires reset. Press RESET button.

POWER INTERRUPTION Light

1. Indicates operating 115V power supply has been interrupted.
2. Power interruptions less than 1 millisecond will not cancel FIRST-OUT display.
3. Power interruptions from 1 to 4 milliseconds will cancel FIRST-OUT display and RESET light. Press RESET button.
4. Power interruptions longer than 4 milliseconds automatically reset TELE-FAULT II.

RESET Light Indicates TELE-FAULT II is operational.

RESET Button

1. Silences alarm and resets TELE-FAULT II.

2. Switches display from FIRST-OUT indication to START-UP mode.
3. Resets POWER INTERRUPTION display.

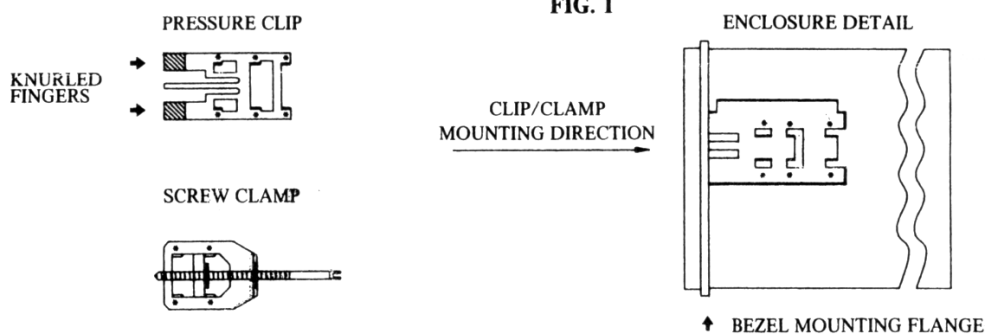
INSTALLATION

The TELE-FAULT II requires a standard 1/4 DIN (92mm x 92mm, 3.622 in. x 3.622 in.) panel cutout. Panel depth should be a minimum of 154.2mm (6.0 in.).

Each TELE-FAULT II is supplied with two slip on Pressure Clips and two slip on Screw Clamps. They may be mounted on any side of the TELE-FAULT II. However, each identical set must be mounted on opposite sides of the enclosure. The purpose of the Pressure Clips is to hold the TELE-FAULT II in the panel cutout prior to installation of the Screw Clamps. Unsnap bezel prior to removing or installing Pressure Clips.

The clips and clamps are mounted by slipping them under the beveled mounting tabs on the enclosure from front to back. See Fig. 1.

Make sure the knurled fingers on the Pressure Clips are behind the bezel mounting flange prior to installation. After installation in panel cutout, mount the two Screw Clamps. Tighten Screw Clamps securely. Do not over tighten.



*BEVELED MOUNTING TABS



PROTECTION CONTROLS, INC.

ELECTRICAL SAFETY EQUIPMENT

7317 N. LAWDALE AVENUE
P.O. BOX 287 • SKOKIE, ILLINOIS 60076-0287
(847) 674-7676 • Chicago Phone: (773) 763-3110
FAX: (847) 674-7009
e-mail@protectioncontrolsinc.com
www.protectioncontrolsinc.com

INSTALLATION, OPERATION AND MAINTENANCE SHALL CONFORM WITH NATIONAL FIRE PROTECTION ASSOCIATION STANDARDS, NATIONAL AND LOCAL CODES, AND AUTHORITIES HAVING JURISDICTION. ANY MODIFICATION VOIDS APPROVALS.

INSTRUCTIONS T-66-R4 PAGE 2

LEGEND CARD INSTALLATION

Each TELE-FAULT II is supplied with two blank legend cards. Each display area - 10mm x 62mm (0.4 in. x 2.4 in.) accepts two lines - 24 letters each of No. 10 size type. It may be necessary to tape legend card to another sheet of paper to facilitate use in some typewriters.

Carefully remove TELE-FAULT II front bezel by unsnapping it from the enclosure. Using a penknife or similar tool gently lift the nameplate on the left side. Slide the legend card under the plastic nameplate using the light holes as guides. Release nameplate and resnap bezel.

APPLICATION GUIDE

The TELE-FAULT II is designed to monitor up to 8 contacts that are closed during normal operation. Any series-parallel combination of limits operating from 24V to 230V ac or dc is permissible. Every monitored string must terminate in a load. If monitored contacts are not powering an operating load, select a suitable load resistor from the Load Table.

LOAD TABLE	
Recommended Load Resistor if Operating Load not used	
24V -	15K ohm 1 watt
120V -	47K ohm 1 watt
230V -	100K ohm 1 watt

If a remote RESET and/or SILENCE ALARM button is used, keep wiring lengths to 10 feet maximum. If longer lengths are required contact the factory. Remote buttons must be dedicated for use on the TELE-FAULT II only. Grounding or applying another power source to TELE-FAULT II terminals 12, 13 or 14 may damage TELE-FAULT II. Removal of the jumper between terminals 13 and 14 will disable SILENCE ALARM relay and it will not affect any other TELE-FAULT II function.

Unused positions should be jumpered from A to B terminals corresponding to the unused position number.

CASCADING TELE-FAULT II

Two or more TELE-FAULT II annunciators can be cascaded when more than 8 monitored positions are required. Power terminals L1 and L2 should be paralleled as well as the alarm contact terminals 9 and 10 if an alarm is used. Connect terminal 8B of the first TELE-FAULT II to terminal 1A of the second TELE-FAULT II and continue to wire limits in a normal fashion. See typical Wiring Diagram on Bulletin T-489.

Cascaded TELE-FAULT II units work independently of each other. Depending on wiring configuration and monitored limit operation, it may be necessary to reset each TELE-FAULT II individually. A single remote RESET button and a single remote SILENCE ALARM button can be used for two or more TELE-FAULT II units, however, each button must have one isolated contact for each TELE-FAULT II. See application Guide above.

The TELE-FAULT II contains no user serviceable components. Return to factory for service. Opening voids warranty. See Bulletin T-489 for additional information.

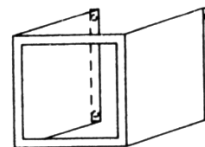
SPECIFICATIONS

Ambient temperatures: Minus 20 to plus 125°F
 Power supply: 120V AC \pm 10%, 50/60 Hz
 Limit circuit: 24V to 230V, AC or DC
 Power consumption: 2 VA
 Alarm contact: 2A

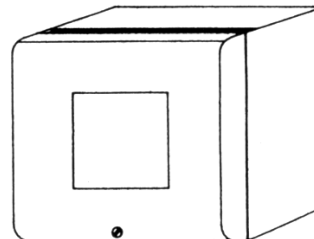
FORM 8966 TELE-FAULT II Parameters

Minimum operating load	470K ohm
FIRST-OUT response time	1 millisecond
POWER INTERRUPTION response time	0.5 millisecond
Impedance per position	approx. 40K ohm

OPTIONAL ACCESSORIES



BRACKET
 WITH 1/4 DIN CUT-OUT
 6-1/2"W x 4-3/4"H x 8"D



GASKETED DUST-TIGHT ENCLOSURE
 WITH 1/4 DIN CUT-OUT
 10-1/2"W x 10"H x 7"D